

AGM Minutes 2023

Appendix 3 Part 1 Chair's Presentation Slides on:

'Community Participation Event and subsequent Local Planning'

CEN CC participation event

- Why?
- What we've done
- What we've learnt about our households
- What we've learnt about our residents' concerns
- What we are doing now
- What we can do in the future
- What we need

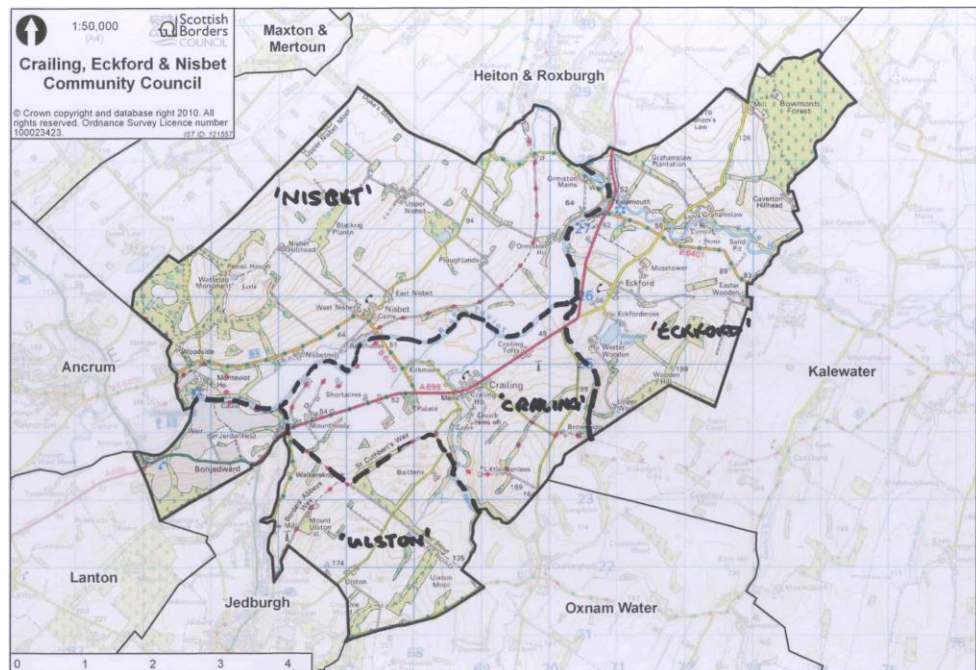
Why?

- CEN CC is not resourced adequately
 - Currently vacancies for 4 Councillors (2 for Crailing, 2 for Eckford)
 - No one wants to be the Vice-Chair or the Secretary
 - Succession planning is based on a Vice-Chair
 - The basic processes and IT support are based around a Secretary
 - The Council workload is unfairly focused on the Chair
- CEN CC is not representative of the community:
 - Councillors are all aged 60+
 - Meetings do not benefit from the perspectives of workers, parents with children and young adults
- CEN CC lacks current data on resident's views and priorities
- Storm Arwen highlighted the need for Community Resilience

What we've done – Informing and Consulting

- We prepared an updated address list from the post code database
 - Just addresses, no names
- We prepared and distributed an updated leaflet reminding residents
 - What CEN CC does now
 - How to contact us and get involved
 - Useful information for Community Resilience
 - The need to fill the vacancies
- We have asked residents face-to-face about:
 - What they liked about living in the CEN CC area
 - What they disliked or wanted changed (their 'concerns')
- We have analyzed residents' concerns to focus our future actions

Areas
used for
the
Leaflet
Drop



What we've learnt about the households

	CENCC Area	<i>Leaflet distribution areas</i>			
		Crailing	Eckford	Nisbet	Ulston
Total number of Households	278	65	81	93	39
But in the four main settlements only		27	22	31	23
164 Households indicated age groups					
School age children	26	4	3	13	6
Working age adults	107	14	30	47	16
Retired adults	97	17	30	31	19

- In general:

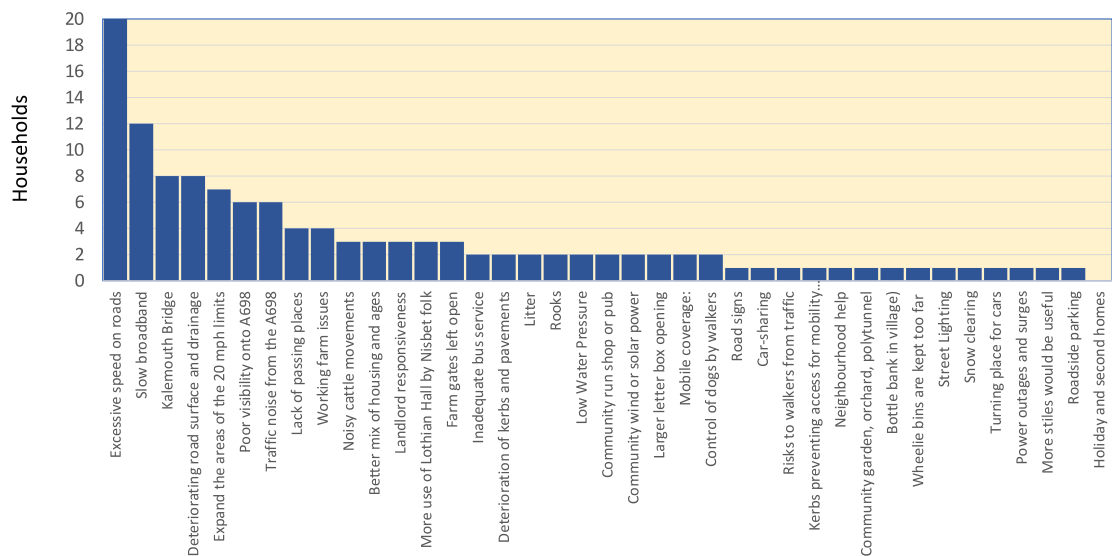
- The major settlements are populated by older and retired adults
- The outlying areas have most of the younger families

Main settlements are taken as TD5 8LN & 8LG, TD8 6TW & 6TP, TD8 6TE & 6TR, TD8 6TF

What we've Learnt about Residents' Concerns

- The overwhelming majority of people were happy to be living in the CEN CC area
- Some concerns were raised by many households
- Some of these concerns were local – i.e. the Kalemouth Bridge
- Others were raised in several areas – i.e. Deteriorating Roads
- There's also a large group of concerns and ideas raised by just 1 or 2 households

Residents' Concerns



What we've Learnt about Residents' Concerns

- The overwhelming majority of people were happy to be living in the CEN CC area
- Some concerns were raised by many households
- Some of these were local – i.e. the Kalemouth Bridge
- Others were raised in several areas – i.e. Deteriorating Roads
- There's also a 'long tail' of concerns and ideas raised by 1 or 2 households
- There's no clear pattern to where the concerns were raised

Residents' Concerns – by distribution area

